

Clean Boats, Clean Waters

Voluntary Boat Launch Steward Stations

Preventing the Spread of Aquatic Invasive Species

Nick Decker
Park Manager, Aquatic Resource Specialist
Bureau of State Parks
ndecker@pa.gov

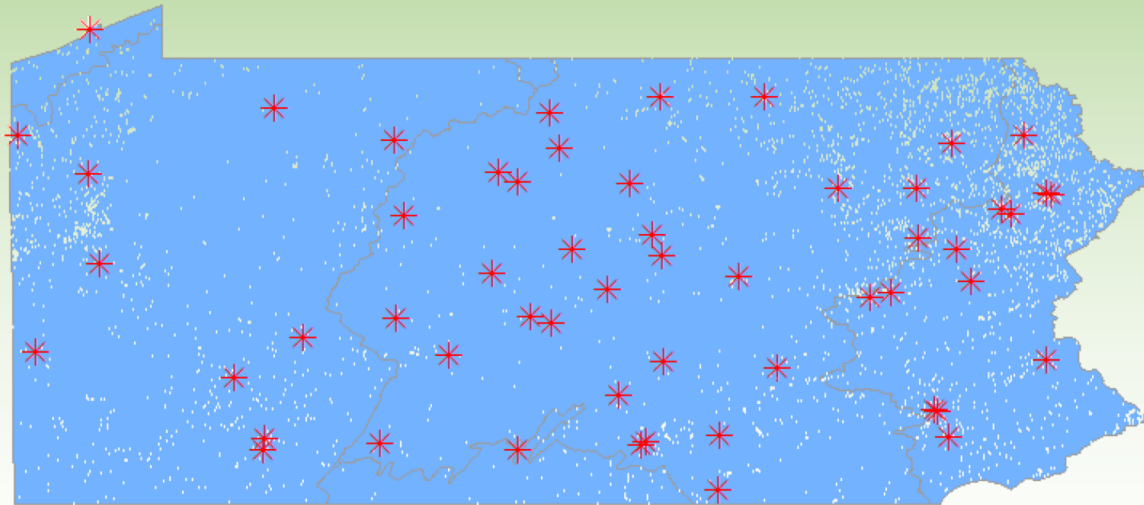
August 5, 2019

www.dcnr.pa.gov



Background

- 55 primary recreational use lakes in PA State Parks
- Majority of these lakes are highly popular man-made impoundments



What is a launch steward station?

Area at a state park boat launch where staff seek boater participation in aquatic invasive species prevention activities as they prepare to launch or retrieve their watercraft.



www.dcnr.pa.gov



pennsylvania
DEPARTMENT OF CONSERVATION
AND NATURAL RESOURCES

Justification

- I. A major identified pathway for introductions of aquatic invasive species worldwide is by the movement of boats.*



www.dcnr.pa.gov

Justification

II. The cost of prevention measures are significantly less than the costs of damages caused by aquatic invasive species and efforts to manage them.




Justification

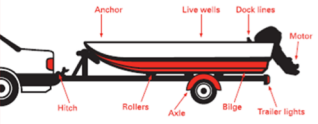
III. There is opportunity to increase awareness of the importance of aquatic invasive species, and gain participation in practices to prevent further spread.

CLEAN YOUR GEAR!

Help prevent the spread of aquatic invasive species.



Check for and remove plants, mud, and aquatic life before transporting
Drain water from boat, live well, bilge, and bait bucket before transporting
Clean boat and gear with hot water, or
Dry everything for at least five days



Check these areas

www.dcnr.pa.gov

**CLEAN.
DRAIN.
DRY.**

**BOATS, TRAILERS & GEAR
STOP INVASIVE SPECIES**



pennsylvania
DEPARTMENT OF CONSERVATION
AND NATURAL RESOURCES



same prevention methods



www.dcnr.pa.gov



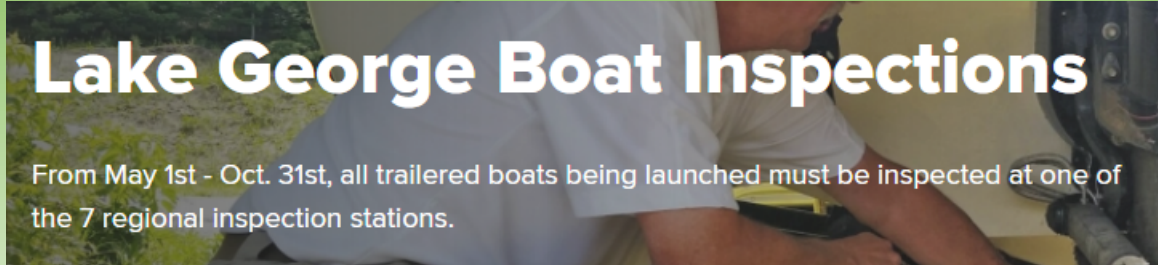
pennsylvania
DEPARTMENT OF CONSERVATION
AND NATURAL RESOURCES

Slide credit:

Adapted from Wisconsin Clean Boats Clean Waters Training

How did it get started?

- Research
- Pilot
- Support
- Expand




Lake George Boat Inspections

From May 1st - Oct. 31st, all trailered boats being launched must be inspected at one of the 7 regional inspection stations.

Deep Creek Lake launch stewards tough on invasive species


Jul 28, 2016

 State of Wisconsin
Department of Natural Resources
Wisconsin Lakes Partnership

Watercraft Inspection Report
Form 3200-120 (R 4/14)

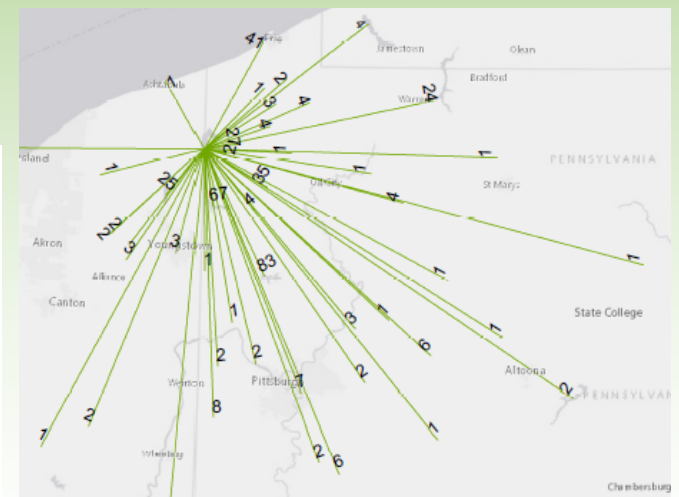
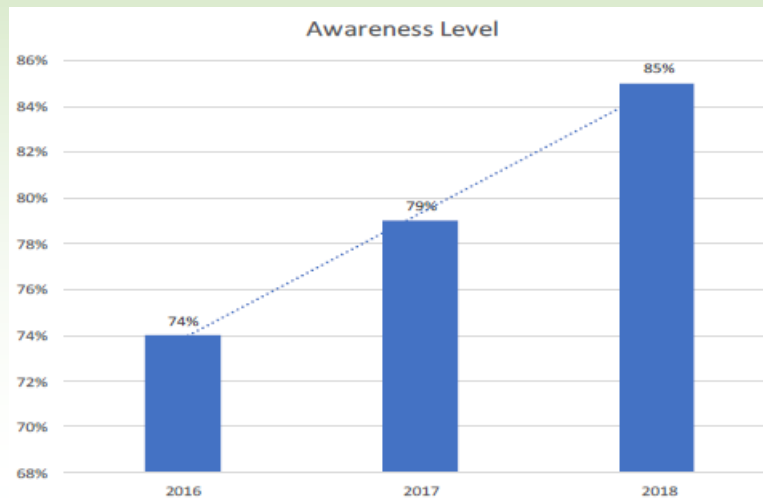
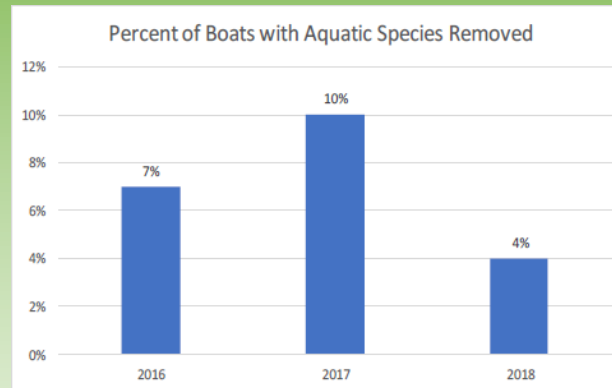
Notice: Information is collected under s. 33.02, Wis. Stats. Personally identifiable information, including names of volunteers, will be broadly distributed in conjunction with lakes data.

Rise in quagga mussels prompts extra inspections at Lake Powell, other Utah waters

Written by Mori Kessler  July 6, 2019

How did it get started?

- Research
- **Pilot**
- Support
- Expand



pennsylvania
DEPARTMENT OF CONSERVATION
AND NATURAL RESOURCES

www.dcnr.pa.gov

How did it get started?

- Research
- Pilot
- **Support**
- Expand



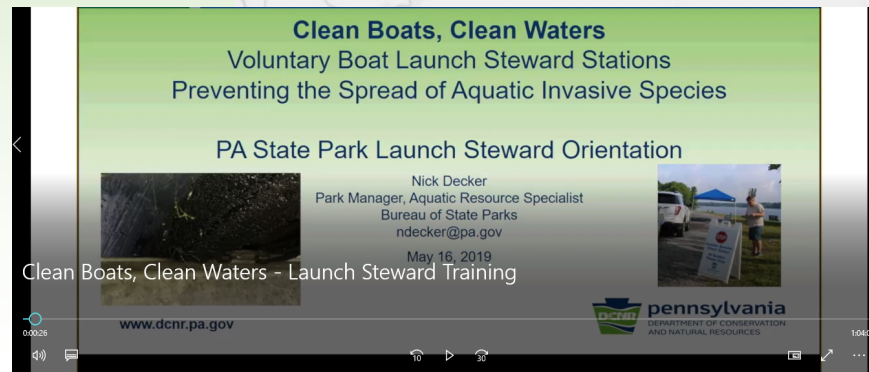
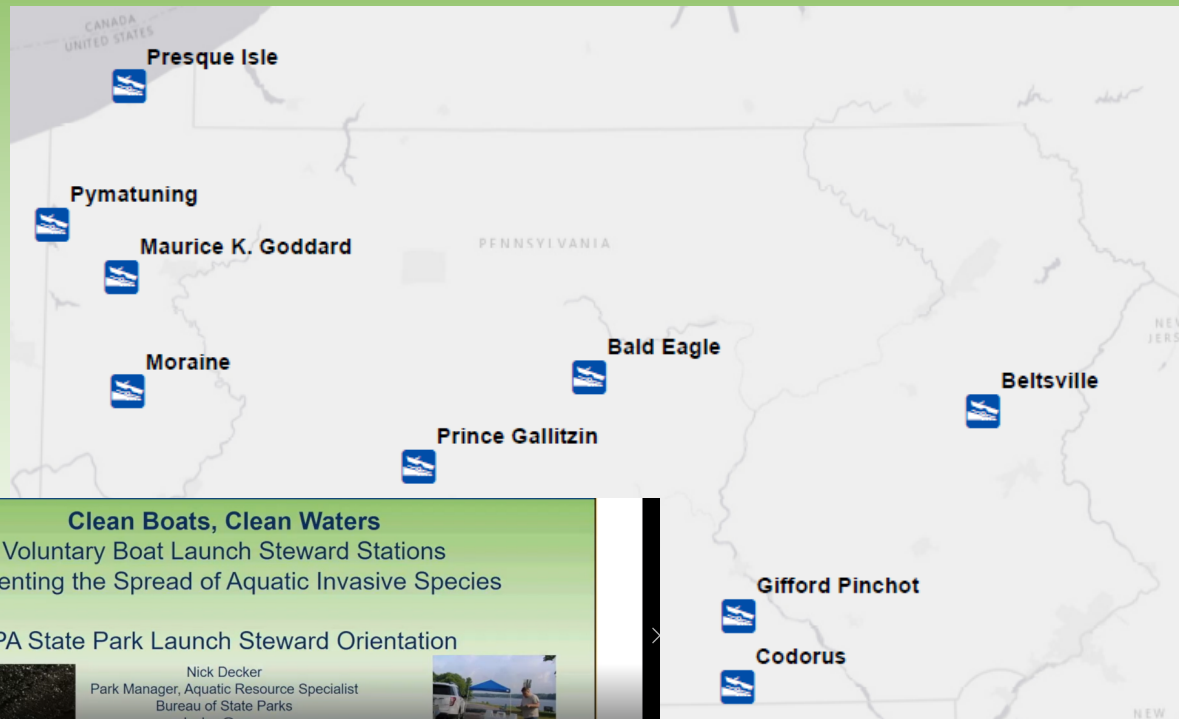
www.dcnr.pa.gov



pennsylvania
DEPARTMENT OF CONSERVATION
AND NATURAL RESOURCES

How did it get started?

- Research
- Pilot
- Support
- **Expand**



www.dcnr.pa.gov



Goals

1. Increase boater awareness for the importance of aquatic invasive species and the issues they create.
2. Increase the practice of actions to prevent the spread of aquatic invasive species by boaters in state parks.
3. Directly prevent the spread of aquatic invasive species.
4. Further inform management activities for aquatic invasive species

Process Objectives

- I. Provide information to boaters about aquatic invasive species and their impacts. (Goal 1)
- II. Demonstrate and guide boaters through an inspection of their watercraft and equipment. (Goal 2)
- III. Seek commitment from boaters to always perform actions that prevent the spread of aquatic invasive species. (Goal 2)
- IV. Remove any aquatic invasive species material found during inspection (Goal 3)
- V. Collect information about interactions with boaters to inform aquatic invasive species management (Goal 4)

Outcome Objectives

- a. Complete at least 3,750 contacts with boaters by seeking their participation in the voluntary inspection program statewide during the 2019 boating season as measured by recorded interactions submitted to the survey tool by station staff (PO I, II, III).
- b. Directly prevent the introduction of at least one new invasive species to a location where it is not already established during the 2019 boating season as documented in the survey tool completed by station staff (PO IV).
- c. Confirm a commitment from 25% of boaters that participate in the voluntary inspection that they can be counted on to continue taking actions that prevent the spread of aquatic invasive species as documented in the survey tool completed by station staff (PO III).

Where we are now?

05/15/2019

Pennsylvania Launches Effort to Stop the Spread of Invasive Species at State Park Lakes

Harrisburg, PA -- Today, Department of Conservation and Natural Resources Secretary Cindy Adams Dunn announced that the department is launching an effort at nine state parks this summer to help prevent the spread of aquatic invasive species, and get boaters involved in invasive species detection.



Day at the Beach- preventing the spread of aquatic invasive species



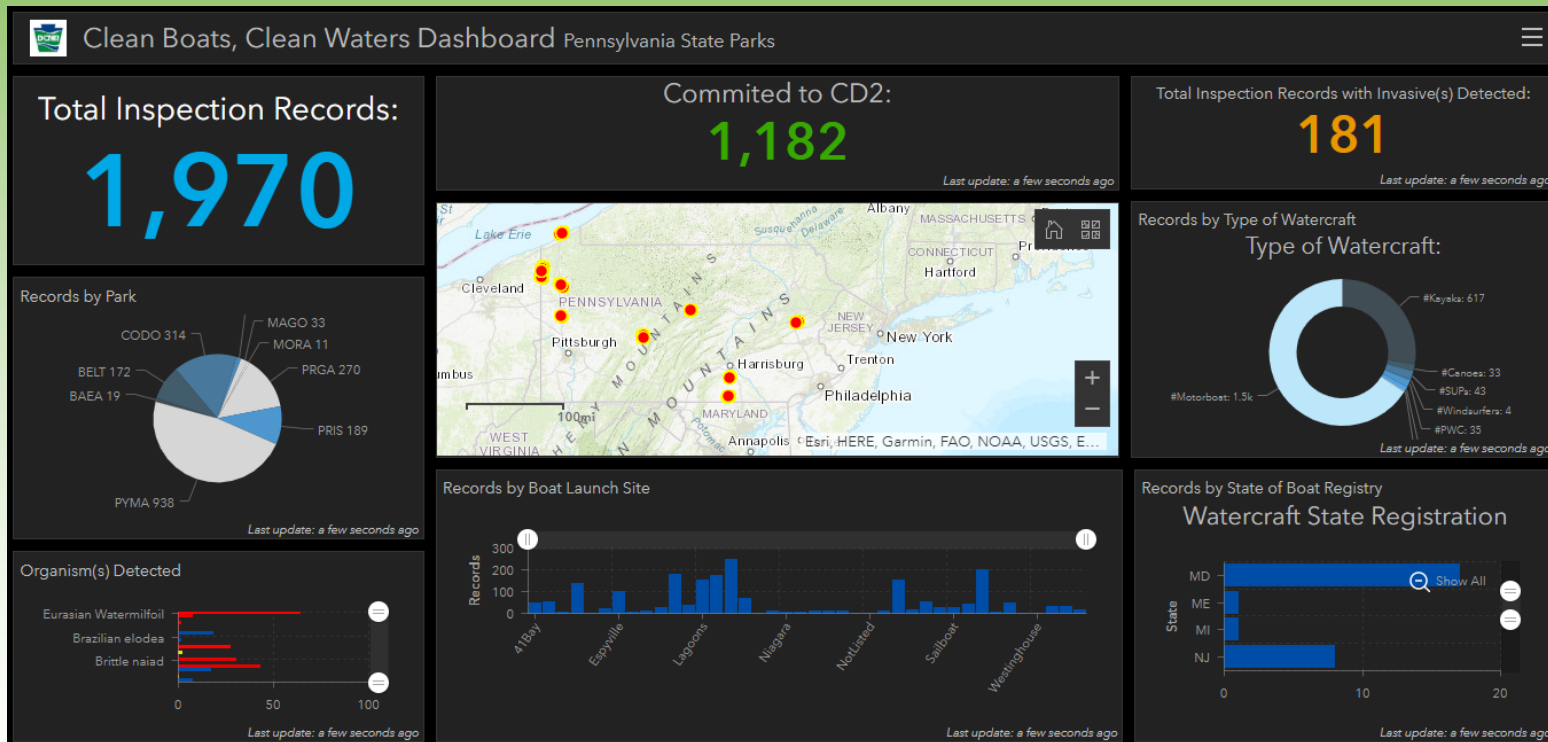
www.dcnr.pa.gov

State parks kick off initiative to stop spread of invasive species



pennsylvania
DEPARTMENT OF CONSERVATION
AND NATURAL RESOURCES

Where we are now?



What is next?

- Deeper analyses
- Further collaboration
- Program refinements
- Legacy development

www.dcnr.pa.gov



Program Development Resources

Launch Steward Stations:

Pennsylvania Sea Grant

Pennsylvania Watercraft Inspection Handbook

March 2019

www.dcnr.pa.gov



Questions

Nick Decker
Park Manager
Bureau of State Parks

717-772-0242
ndecker@pa.gov

www.dcnr.pa.gov



pennsylvania
DEPARTMENT OF CONSERVATION
AND NATURAL RESOURCES